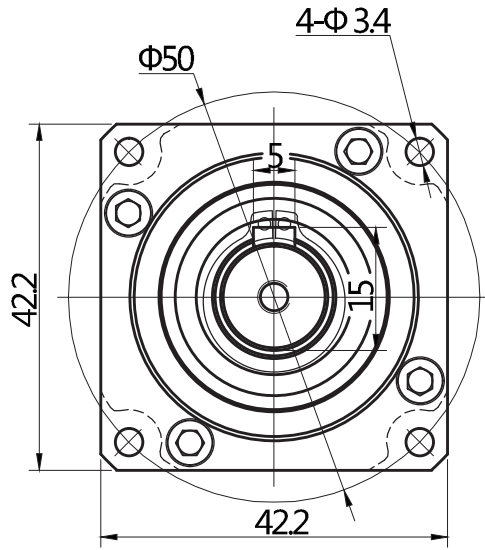
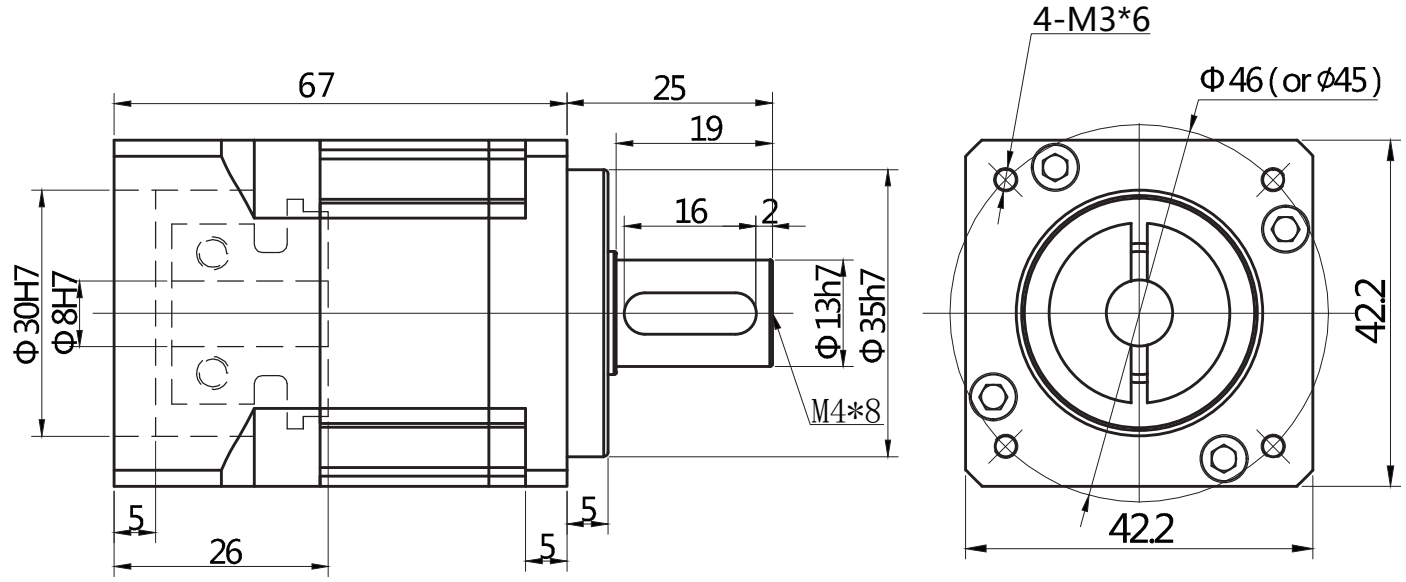


This drawing is our intellectual property and is only used for exclusively personal and confidential use. It may not be copied reproduced disclosed or made available to third parties in any form whatsoever without our written permission.

Output



Input



- 1、 Common deceleration ratio: 20、 25、 40
Less commonly used deceleration ratio: 16、 32、 64
- 2、 Rated output torque: 15 Nm
- 3、 Maximum output torque: Two times the rated output torque
- 4、 Rated input speed: 3000 RPM
- 5、 Maximum input speed: 6000 RPM
- 6、 Backlash: ≤ 10 Arcmin
- 7、 Noise: ≤ 60 dB

The input end size that can be made by this product:
 6.35/30/46-M4/25 8/30/45-M3/25 8/30/46-M4/25
 5/22/43.8-M3/25 6.35/22/43.8-M3/25 8/22/43.8-M3/2

Drawing unit: mm The size of the motor suitable for this drawing 8/30/45-M3/25 8/30/46-M4/25	40TDF-084630-L2-H	Planetary gear reducer
	Group internal figure number: H0605110032	

SPECIFICATIONS ARE SUBJECT TO CHANGE WITHPUT PRIOR NOTICE.